

MANITOU
GROUP

CT Novice Presentation

Industry - 12/2019





1 CT range

2 Machine features

3 Options

1

CI range

Machine
features

Options

Glossary

/ CT range



PHOTOS APPLI CT

- A **CT** can transport heavy loads (**3t to 5t**), perfectly suited to all indoor applications with a speed of **12 Km/h**.

TRACTOR

Rider

Electrical 24V

CT

CT 30

CT 40

CT 50



- CT 30
- CT 40
- CT 50

Capacity



Electric tractors

- Seated driver
- Turtle control
- 4 points wheel configuration



- Battery 375Ah to 465Ah
- High precision control for a better handling

CT - Product range

CT 30

- Power: 2 kW
- Battery capacity: 24V
- Lifting capacity: 3T



CT 40

- Power: 2 kW
- Battery capacity: 24V
- Lifting capacity: 4T



CT 50

- Power: 2 kW
- Battery capacity: 24V
- Lifting capacity: 5T



2

CI range

Machine
features

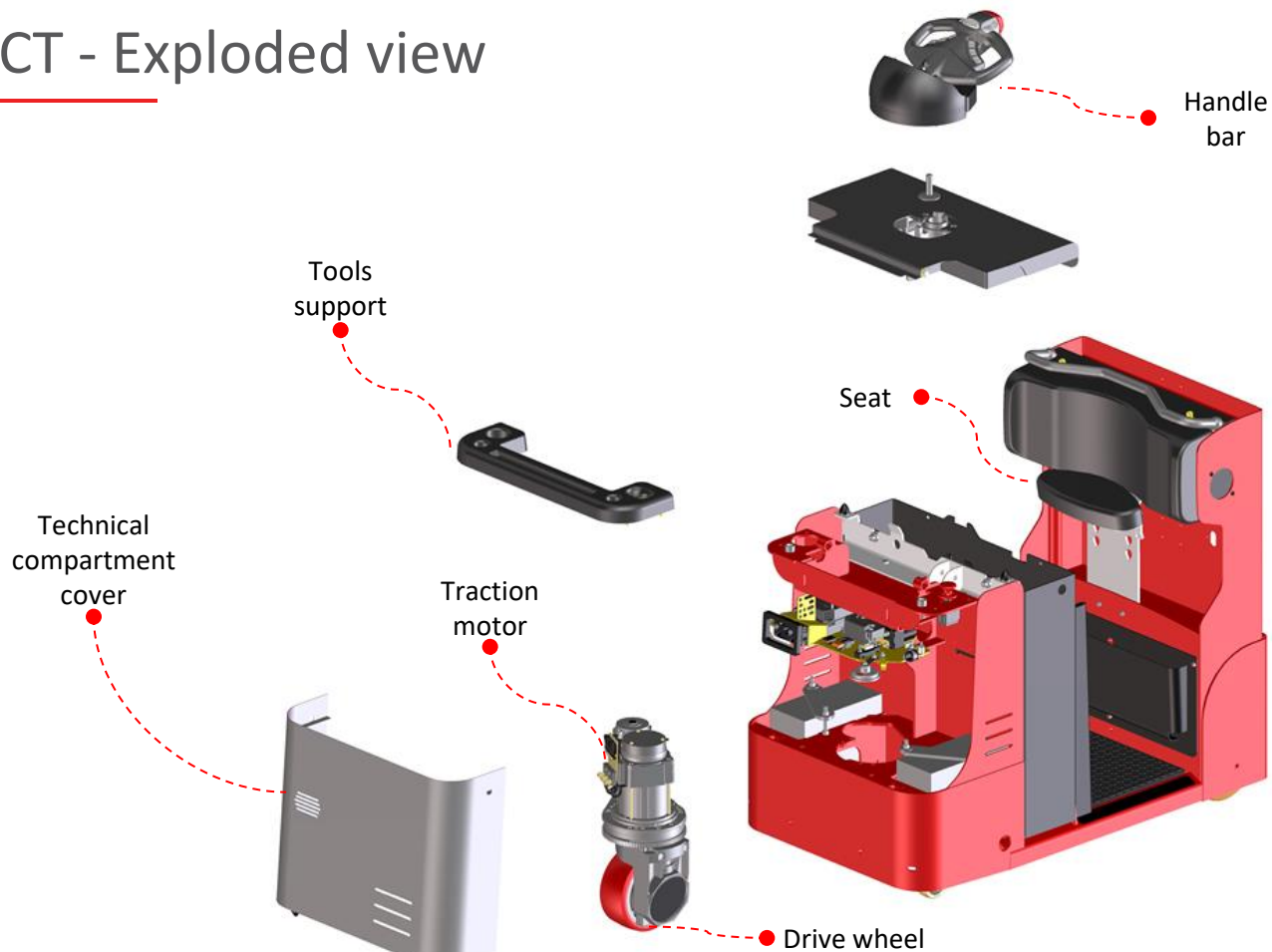
Options

Glossary

/ Machine features



CT - Exploded view



- Wheels exist in different material in order to be adapted to the customer's floor
 - Polyurethane
 - No marking solid tyres (treated, smooth)
 - Cushion tyres (rubber smooth)
 - Anti-static belt
- Shore: wheel hardness measure unit

Polyurethane driving wheel - Std



Hardness 92 shore

- Heavy load
- Intensive use



Hardness 75 shore

- Soft wheel
- Less noise
- Better grip
- Shorter lifetime

3

CI range

Machine
features

Options

Glossary

/ Options



3 CT - Options

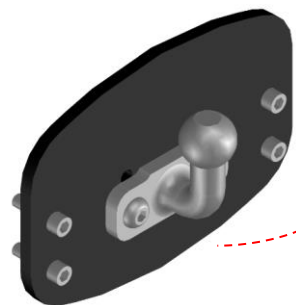
- **Comfort options:**

- Adjustable writing board A4 format
- Front rubber bumper
- Creep speed button ON/OFF
- Creep speed: backing functions Forward / Backward (side buttons)
- Back storage compartment
- Closed rear trunk
- Trash can
- 3-position back cushion support

- **Battery options:**

- Hawker/Exide
- Battery central filling system
- Various capacities of battery and charger
- Battery lateral exchange
- 2 compartments battery transfert table with rollers
- Additional battery (+ connexion cable)

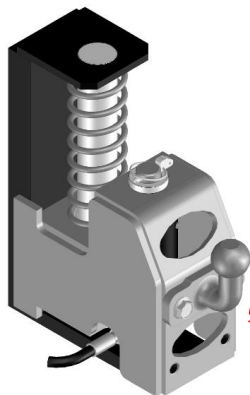
CT - Options



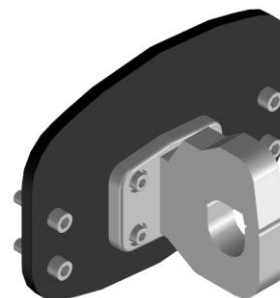
Fixed coupling ball



3 positions coupling attachment



Hydraulic lifting
(coupling ball
exclusively)



Fixed coupling hook
with security
retaining latch

Manual uncoupling
lever in the driver
compartment
(coupling attachment)



4 General glossary

- AC: Alternating Current
- BDI: Battery Discharge Indicator
- CACES: Certificat d'Aptitude à la Conduite En Sécurité
- CoG: Center of Gravity
- DC: Direct Current
- DL: Double Lift
- EL: Ergonomic Lift
- FLD: Free Lift Duplex
- FLQ: Free Lift Quadruplex
- FLT: Free Lift Triplex
- FR : Wrapover Forks (Fourches Recouvrantes)
- FVD: Full Visibility Duplex
- FVT: Full Visibility Triplex
- GPF: Counterbalanced stacker (Gerbeur porte-à-faux)
- HD: Heavy Duty
- HL: High Lift
- HF: High Frequency
- LI: Initial Lift (Levée Initiale)
- LE: Straddle Legs (Longerons Encadrants)
- PPS: Pneus Plein Souple
- PU: Polyurethane
- SL: Lateral Battery Exchange (Sortie Latérale)
- VNA: Very Narrow Aisle

