

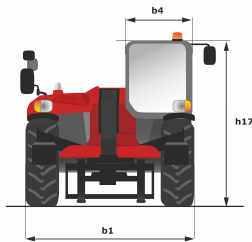
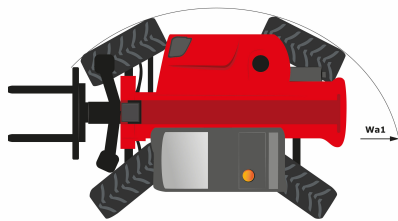
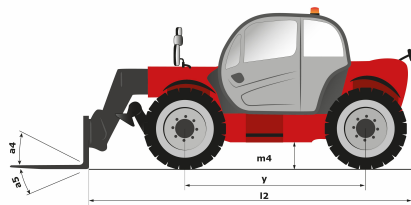
Technical sheet

MT 1840 EASY

Telehandlers

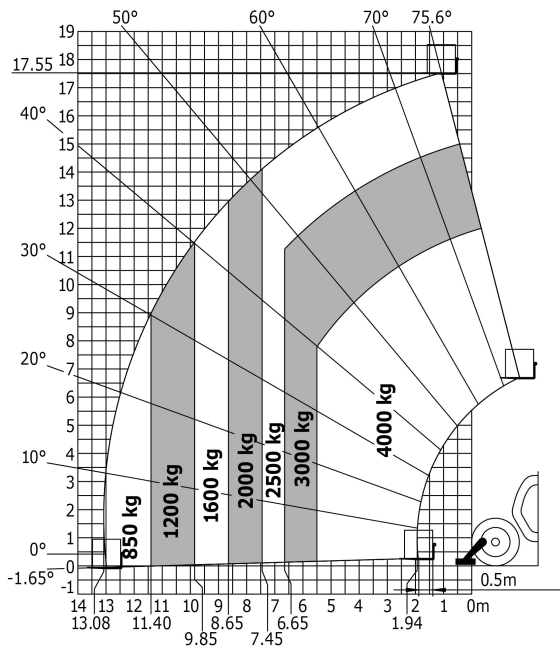
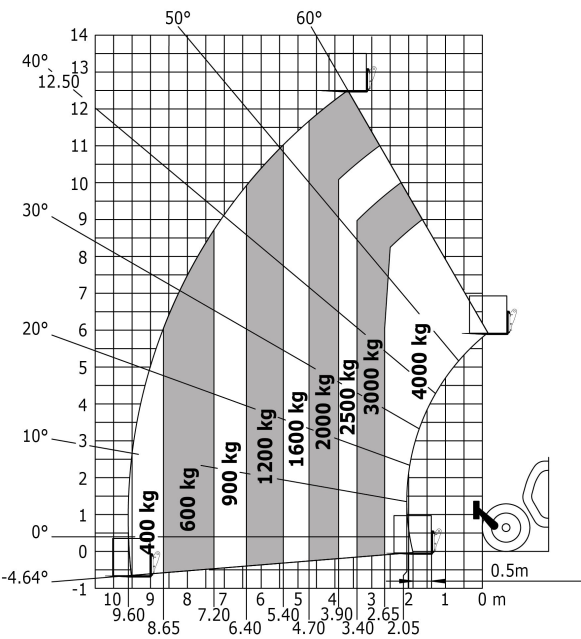


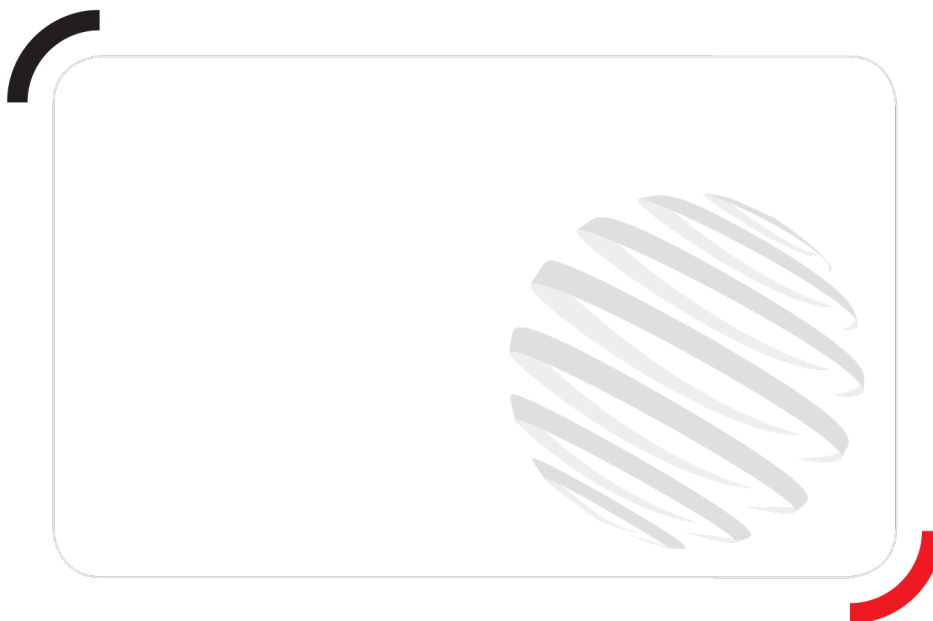
Capacities	Metric	Imperial
Max. capacity	4000 kg	8800 lbs
Max. lift height	17.55 m	57 ft 7 in
Max. reach	13.08 m	42 ft 11 in
Bucket breakout force	8150 daN	18321.92 lbf
Weight and dimensions		
l2 - Overall length of fork carriage	6.27 m	20 ft 7 in
b1 - Overall width	2.42 m	7 ft 11 in
h17 - Overall height	2.50 m	8 ft 2 in
y - Wheelbase	3.07 m	10 ft 1 in
m4 - Ground clearance	0.42 m	1 ft 5 in
b4 - Overall cab width	0.89 m	2 ft 11 in
a4 - Tilt-up angle	12 °	12 °
a5 - Tilt-down angle	114 °	114 °
Wa1 - Frame outer turning radius	4.01 m	13 ft 2 in
Unladen weight (with forks)	11700 kg	25794.08 lbs
Standard tyres	Pneumatic	Pneumatic
Standard forks	1200x125x50	3.93x0.41x1,96
Performances		
Lifting	16 s	16 s
Lowering	12 s	12 s
Telescope extension	16 s	16 s
Retracting the telescope	9.50 s	9.50 s
Scoop	4 s	4 s
Dump	4 s	4 s
Engine		
Brand	Deutz	Deutz
Environmental standards	3B / Tier IV Final	3B / Tier IV Final
Model	854E-E34TA	854E-E34TA
Number of cylinders - Capacity	- - 3621 cm³	- - 220.96 in³
Power	75 hp / 55.40 kW	75 hp / 55.40 kW
Max. torque	330 Nm at -	243.39 ft.lbs at -
Laden drawbar pull	8500 daN	19108.76 lbf
Transmission		
Type	Torque Converter	Torque Converter
Number of gears (forward/reverse)	4/4	4/4
Parking brake	Automatic negative parking brake	Automatic negative parking brake
Service brake	Oil-Immersed Multi-Discs on Front & Rear Axles	Oil-Immersed Multi-Discs on Front & Rear Axles
Hydraulics		
Type of pump	Gear pump	Gear pump
Hydraulic flow rate - Pressure	170 l/min - 270 bar	53 gpm - 3916 psi
Tank capacities		
Engine oil	135 l	35.66 US gal.
Hydraulic oil	135 l	35.66 US gal.
Fuel	140 l	36.98 US gal.
Noise & vibration		
Noise at driving position (LpA)	78 dB(A)	78 dB(A)
Noise to environment (LwA)	103 dB(A)	103 dB(A)
Vibration on hands/arms	<2.5 m/s²	<8.2021 ft/s²
Miscellaneous		
Steering wheels / Driving wheels	4 / 4	4 / 4
Safety	Standard EN 15000 Cab ROPS - FOPS Level 2	Standard EN 15000 Cab ROPS - FOPS Level 2
Controls	JSM	JSM



Load chart

Machine on tyres with forks - with levelling





Siège Social
430 rue de l'Aubinière - 44150 Ancenis Cedex - France
Tel: +33(0)2 40 09 10 11 - Fax: +33 (0)2 40 09 10 97
www.manitou.com



This brochure describes versions and configuration options for Manitou products which may be fitted with different equipment. The equipment described in this brochure may be standard, optional or not available depending on version. Manitou reserves the right to change the specifications shown and described at any time and without prior warning. The manufacturer is not liable for the specifications given. For more information, contact your Manitou dealer. Non-contractual document. Product descriptions may differ from actual products. List of specifications is not comprehensive. The logos and visual identity of the company are the property of Manitou and may not be used without authorisation. All rights reserved. The photos and diagrams contained in this brochure are provided for information only.

MANITOU BF SA - Limited company with board of directors - Share capital: 39,547,824 euros - 857 802 508 RCS Nantes