

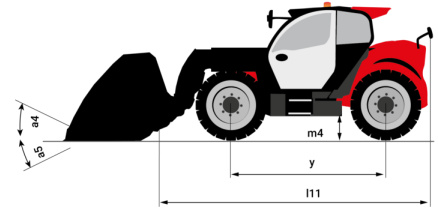
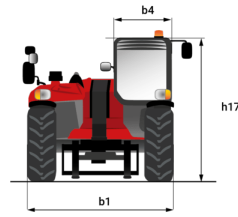
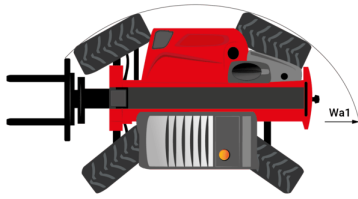
Technical sheet :

MLT 850-145 V+



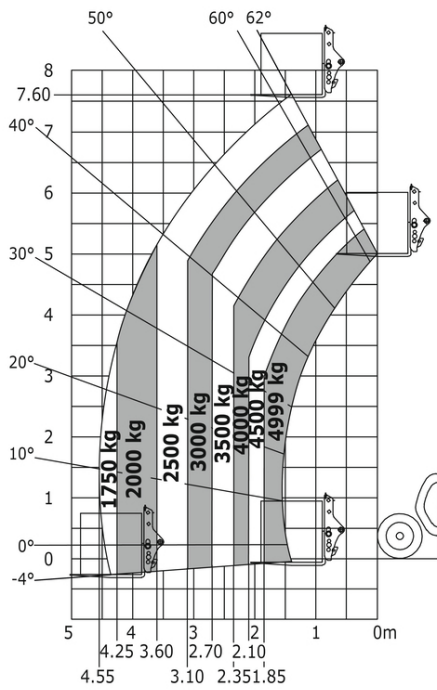
Capacities		Metric	Imperial
Max. capacity	Q	4999 kg	11021 lb
Max. lifting height	h3	7.60 m	24 ft 11 in
Max. outreach		4.55 m	14 ft 11 in
Reach at max. height		0.90 m	2 ft 11 in
Breakout force with bucket		8670 daN	8670 daN
Weight and dimensions			
Unladen weight (with forks)		10780 kg	23766 lb
Ground clearance	m4	0.45 m	1 ft 6 in
Wheelbase	y	2.94 m	9 ft 8 in
Overall length to carriage (with hitch)	l11	5.57 m	18 ft 3 in
Front overhang		1.55 m	5 ft 1 in
Overall width	b1	2.49 m	8 ft 2 in
Overall cab width	b4	0.99 m	3 ft 3 in
Overall height	h17	2.58 m	8 ft 6 in
Tilt-down angle	a5	132 °	132 °
Tilt-up angle	a4	12 °	12 °
External turning radius (over tyres)	Wa1	4.04 m	13 ft 3 in
Standard tyres		Alliance - A580 - 500/70 R24 164A8	Alliance - A580 - 500/70 R24 164A8
Drive wheels (front / rear)		2 / 2	2 / 2
Steering wheels (front / rear)		2 / 2	2 / 2
Performances			
Lifting		6.60 s	6.60 s
Lowering		4.90 s	4.90 s
Extension		6.30 s	6.30 s
Retraction		5.70 s	5.70 s
Crowd		4.20 s	4.20 s
Dump		3.10 s	3.10 s
Engine			
Engine brand		Yanmar	Yanmar
Engine norm		Stage V / Tier 4 Final	Stage V / Tier 4 Final
Max. fuel sulphur content		1000 ppm	1000 ppm
Engine model		4TN107FHT-5SMUF	4TN107FHT-5SMUF
Number of cylinders - Capacity of cylinders		4 - 4567 cm³	4 - 279 in³
I.C. Engine power rating / Power (kW)		105.14 kW / 105 kW	141 Hp / 141 Hp
Max. torque / Engine rotation		602 Nm @1500 rpm	444 ft/lbs @1500 rpm
Drawbar pull (Laden)		9160 daN	9160 daN
Reversible fan		Standard	Standard
Engine cooling system		3 radiators water + air + oil transmission	3 radiators water + air + oil transmission
Transmission			
Transmission type		Continuously variable transmission	Continuously variable transmission
Gearbox		M-Vario Plus	M-Vario Plus
Max. travel speed (may vary according to applicable regulations)		40 km/h	25 mi/h
Differential lock		Limited slip differential on front and rear axles	Limited slip differential on front and rear axles
Parking brake		Automatic negative parking brake	Automatic negative parking brake
Service brake		Oil-immersed multi-discs braking on front & rear axles	Oil-immersed multi-discs braking on front & rear axles
Hydraulics			
Hydraulic pump type		Variable displacement pump	Variable displacement pump
Hydraulic flow - Pressure		200 l/min - 270 bar	53 US gpm - 3916 PSI
Flow sharing distributor		Standard	Standard
Tank capacities			
Hydraulic oil		141 l	37 US gal
Fuel tank		142 l	38 US gal
Diesel Exhaust fluid (AdBlue® type)		21.50 l	6 US gal
Consumption calculated according to EN 16796-4 standard		0.10 l/min	0.03 US gpm
Noise and vibration			
Noise at driving position (LpA) tested following NF EN 12053 norm		69 dB	69 dB
Environmental noise (LwA)		105 dB	105 dB
Vibration to whole hand/arm		< 2.50 m/s²	< 2.50 m/s²
Miscellaneous			
Tractor homologation		Tractor homologation	Tractor homologation
Safety cab homologation		Cabin ROPS - FOPS Level 2	Cabin ROPS - FOPS Level 2
Controls		JSM	JSM

MLT 850-145 V+ - Dimensional drawing

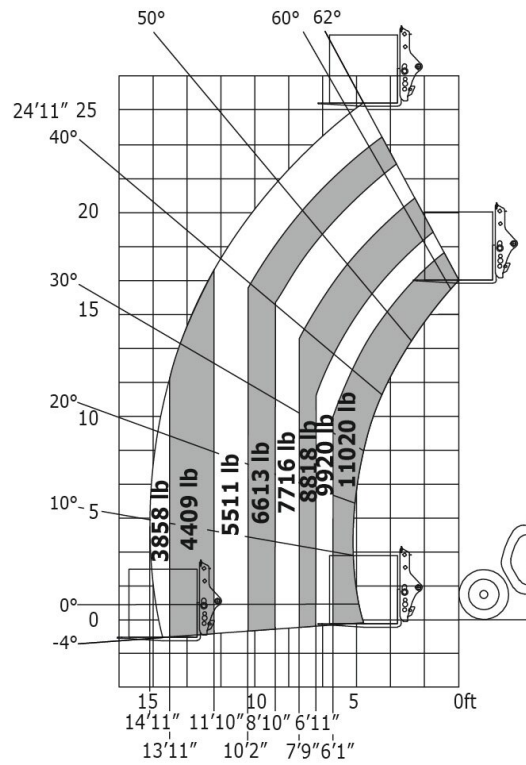


MLT 850-145 V+ - Load chart

Machine on tyres with forks Metric



Machine on tyres with forks Imperial





Head Office

B.P. 249 - 430 rue de l'Aubinière

44150 Ancenis Cedex - France

Tel: +33 (0)2 40 09 10 11 - Fax: +33 (0)2 40 09 10 97

www.manitou.com



This publication provides a description of the configuration versions and options for Manitou products, which may differ for equipment. The equipment presented in this brochure may be part of a series, as an option, or it may not be available, depending on the versions. Manitou reserves the right, at any time and without notice, to amend the specifications described and represented. The specifications provided do not bind the manufacturer. For more details, please contact your Manitou agent. This is not a contractually binding document. The presentation of the products is not contractually binding. List of specifications non-exhaustive. The logos as well as the visual identity of the company are owned by Manitou and cannot be used without authorisation. All rights reserved. The photos and diagrams contained in this brochure are only provided for consultation and information purposes.

MANITOU BF SA - Limited company with board of directors - Share capital: 39,668,399 euros - 857 802 508 RCS Nantes