

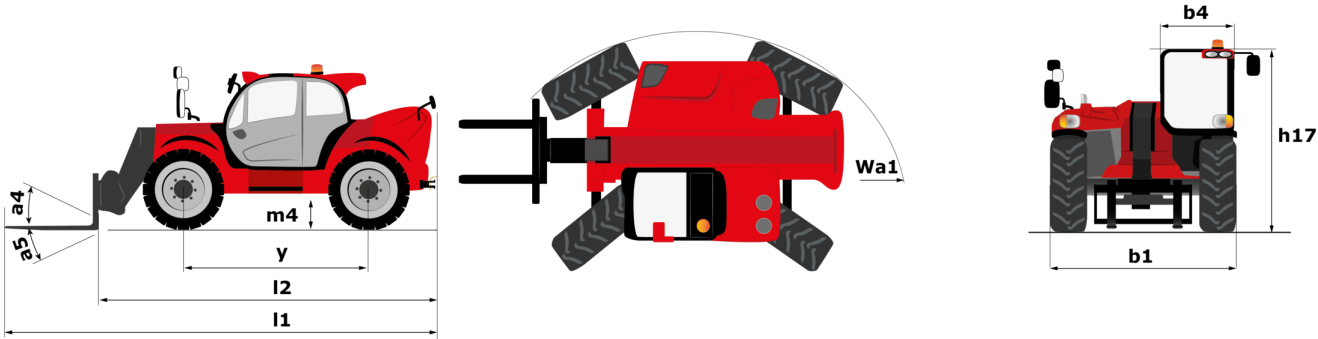
Technical sheet :

MHT 14350



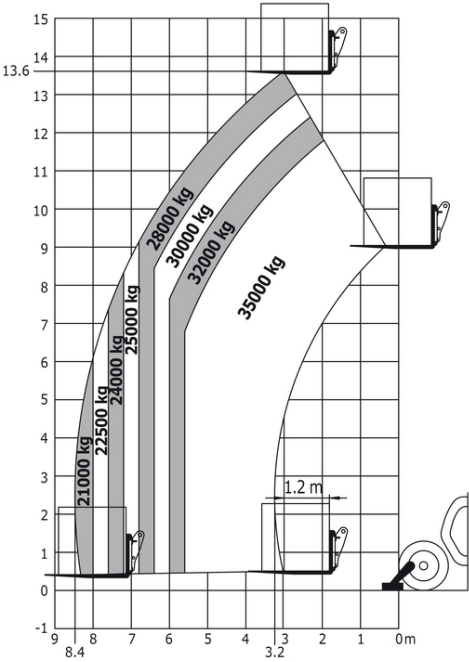
Capacities		Metric
Max. capacity		35000 kg
Load centre of gravity	c	1200 mm
Max. lifting height		13.60 m
Max. outreach		8.50 m
Weight and dimensions		
Overall length	l1	10.93 m
Unladen weight (with forks)		69000 kg
Ground clearance	m4	0.69 m
Wheelbase	y	5.70 m
Length to face of forks	l2	10.93 m
Overall width	b1	3.53 m
Overall height	h17	3.82 m
Tilt-down angle	a5	107 °
Tilt-up angle	a4	15 °
External turning radius (over tyres)	Wa1	7.32 m
Outer turning radius (with forks)	b15	10.07 m
Forks length / width / section	l / e / s	2400 mm x 300 mm / 135 mm
Frame levelling corrector	a9	8 °
Wheels		
Standard tyres		24.00 R35
Number of rear wheels		2
Steering wheels (front / rear)		2 / 2
Drive wheels (front / rear)		2 / 2
Steering mode		2 wheel steer, 4 wheel steer, Crab mode
Engine		
Engine brand		Mercedes
Engine norm		Stage IV / Tier 4 Final
Engine model		OM 936 LA
Number of cylinders / Capacity of cylinders		6 - 7200 cm ³
I.C. Engine power rating / Power (kW)		350 Hp / 260 kW
Max. torque / Engine rotation		1600 Nm@1600 rpm
Engine cooling system		Water
Battery / Batteries capacity		24 V / 180 Ah
Drawbar pull (Laden)		33000 daN
Transmission		
Transmission type		Hydrostatic with Powershift
Number of gears (forward / reverse)		3 / 3
Max. travel speed		25 km/h
Parking brake		Automatic negative brake
Service brake		Hydraulic
Hydraulics		
Hydraulic pump type		Variable displacement pump
Hydraulic flow - Pressure		400 l/min - 350 bar
Tank capacities		
Engine oil		29 l
Hydraulic oil		760 l
Fuel tank		720 l
Diesel Exhaust fluid (AdBlue® type)		63 l
Noise and vibration		
Noise at driving position (LpA)		80 dB
Noise to environment (LwA)		107 dB
Vibration on hands/arms		< 2.50 m/s ²
Miscellaneous		
Safety cab homologation		Cabin ROPS - FOPS Level 2
Controls		JSM
Attachment recognition system (E-Reco)		Standard

MHT 14350 - Dimensional drawing



MHT 14350 - Load chart

Machine on stabs with forks LC 600 mm Metric





Siège Social

430 rue de l'Aubinière - 44150 Ancenis Cedex - France

Tel: +33(0)2 40 09 10 11 - Fax: +33 (0)2 40 09 10 97

www.manitou.com



This brochure describes versions and configuration options for Manitou products which may be fitted with different equipment. The equipment described in this brochure may be standard, optional or not available depending on version. Manitou reserves the right to change the specifications shown and described at any time and without prior warning. The manufacturer is not liable for the specifications given. For more information, contact your Manitou dealer. Non-contractual document. Product descriptions may differ from actual products. List of specifications is not comprehensive. The logos and visual identity of the company are the property of Manitou and may not be used without authorisation. All rights reserved. The photos and diagrams contained in this brochure are provided for information only.

MANITOU BF SA - Limited company with board of directors - Share capital: 39,668,399 euros - 857 802 508 RCS Nantes