

Technical sheet :

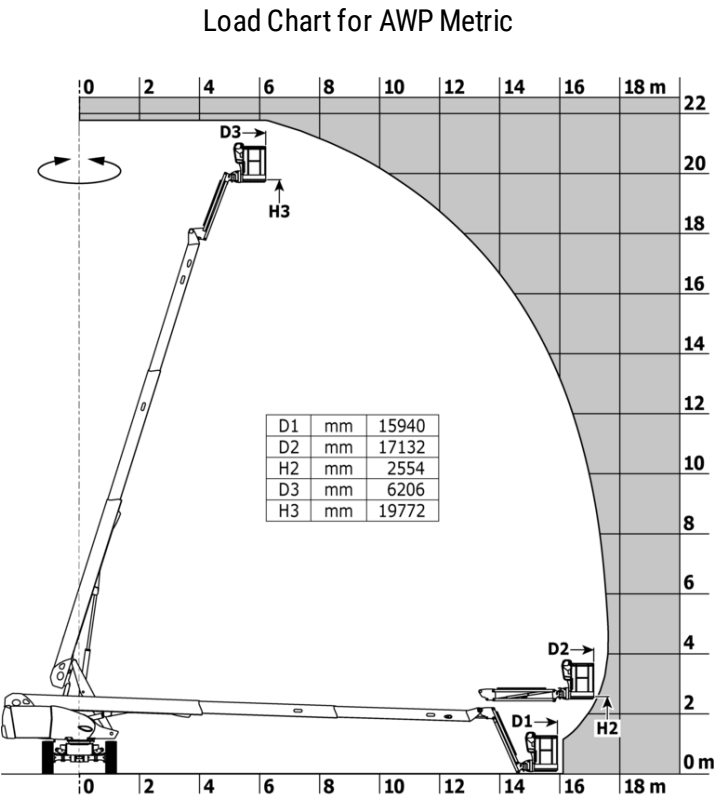
# 220 TJ+



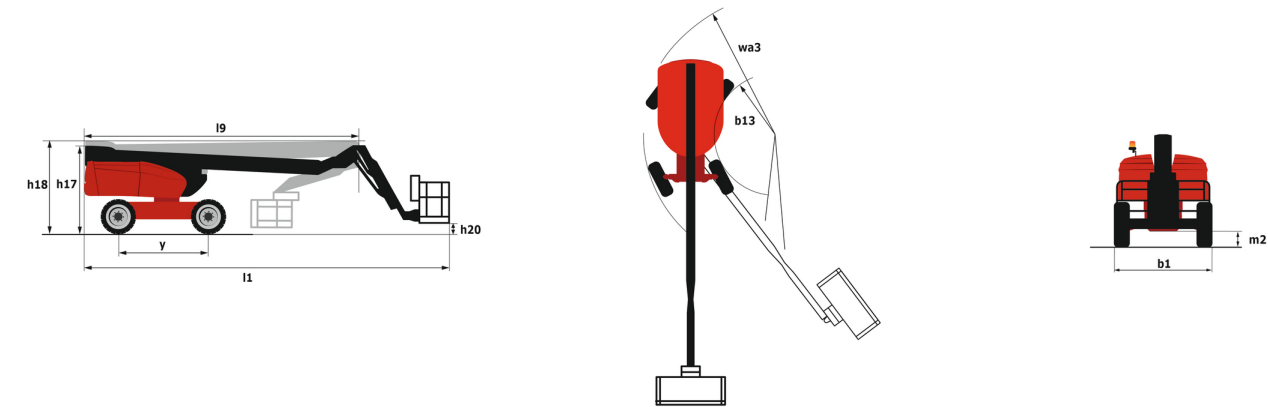
Capacities		Metric
Working height	h21	21.74 m
Platform height	h7	19.74 m
Max. outreach		17.79 m
Pendular arm rotation (top / bottom)		+70 ° / -63 °
Platform capacity	Q	400 kg
Turret rotation		360 °
Platform rotation (right / left)		90 ° / 90 °
Number of people (inside / outside)		3 / 3
Weight and dimensions		
Platform weight*		13600 kg
Platform dimensions (length x width)	lp / ep	2.30 m x 0.90 m
Overall width	b1	2.48 m
Overall length	l1	10.06 m
Overall height	h17	2.66 m
Overall length (stowed)	l9	7.35 m
Overall height (stowed)	h18	3.03 m
Floor height (access)	h20	0.39 m
Jib length	l13	2 m
Counterweight offset (turret at 90°)	a7	1.34 m
Internal turning radius (over tyres)	b13	2 m
External turning radius	Wa3	4.40 m
Ground clearance at centre of wheelbase	m2	0.44 m
Wheelbase	y	2.80 m
Performances		
Drive speed - stowed		4.90 km/h
Drive speed - raised		1 km/h
Gradeability		40 %
Permissible leveling		4 °
Wheels		
Tyres type		Solid Tyres Cured-On
Dimensions of front wheels / rear wheels		1025 x 365 mm - 1025 x 365 mm
Drive wheels (front / rear)		2 / 2
Steering wheels (front / rear)		2 / 2
Braking wheels (front / rear)		2 / 2
Engine/Battery		
Engine brand / model		Yanmar - 3TNV88C
Engine nom		Stage V
I.C. Engine power rating / Power (kW)		36.20 Hp / 27.50 kW
Miscellaneous		
Ground Pressure		18.30 dan/cm2
Hydraulic Pressure		400 bar
Hydraulic tank capacity		94 l
Fuel tank		72 l
Noise to environment (LwA)		< 105 dB
Standards compliance		
This machine is in compliance with:		European directives: 2006/42/EC- Machinery (revised EN280:2013) - 2004/108/EC (EMC) - 2006/95/EC (Low voltage)

\*Varies according to options and standards of the country to which the machine is delivered

220 TJ+ - Load chart



220 TJ+ - Dimensional drawing



# Equipment

## Standard

230V Predisposition

4 simultaneous movements

4 wheel drive

4 wheel steer with crab mode

Audible alarm and illuminated indicator lamp (leveling, overload, lowering)

Backup electrical pump

Basket 2,300 mm

Connected machine

Continuous turret rotation

Differential locking on rear axle

Easy fast slinging system

Electronic platform compensation

Emergency stop button in platform and on frame

Engine mounted on sliding platform

Engine with DPF

Front axle with limited slip

Fuel gauge with low level indicator

Hour meter

Integrated diagnostic assistance

LED rotating beacon

LS pump

Large color screen on turret

Leveling unlocking

Oscillating front axle

Protective cover for control panel

Remote control for transport

Stop & Go system

Turret orientation information

## Optional

110 or 230V plug with differential circuit breaker

Access control keypad for easy link

Additional storage boxes

Basket 2,300 mm

Battery blanket

Battery cut-off

Beep on every movement

Beep upon travel

Biodegradable oil

Easy link with remote lock

Engine Block Heater

Hydraulic oil heater

Key lock on fuel tank

Narrow basket 1.80m

Non marking solid tyres

Onboard generator (3,5 or 5 kW)

Panel cradle

Pipe cradle

SPS : Secondary protection system

Safety kit (Harness + helmet)

Safety valve

Screen protection on the lower box control

Socket 230 V + differential circuit breaker

Spark arrester

Special color paints

Turret cover with key lock

Water predisposition

Working light



Siège Social  
430 rue de l'Aubinière - 44150 Ancenis Cedex - France  
Tel: +33(0)2 40 09 10 11 - Fax: +33 (0)2 40 09 10 97  
[www.manitou.com](http://www.manitou.com)



This brochure describes versions and configuration options for Manitou products which may be fitted with different equipment. The equipment described in this brochure may be standard, optional or not available depending on version. Manitou reserves the right to change the specifications shown and described at any time and without prior warning. The manufacturer is not liable for the specifications given. For more information, contact your Manitou dealer. Non-contractual document. Product descriptions may differ from actual products. List of specifications is not comprehensive. The logos and visual identity of the company are the property of Manitou and may not be used without authorisation. All rights reserved. The photos and diagrams contained in this brochure are provided for information only.

MANITOU BF SA - Limited company with board of directors - Share capital: 39,668,399 euros - 857 802 508 RCS Nantes