

Technical sheet :

# 200 ATJ E

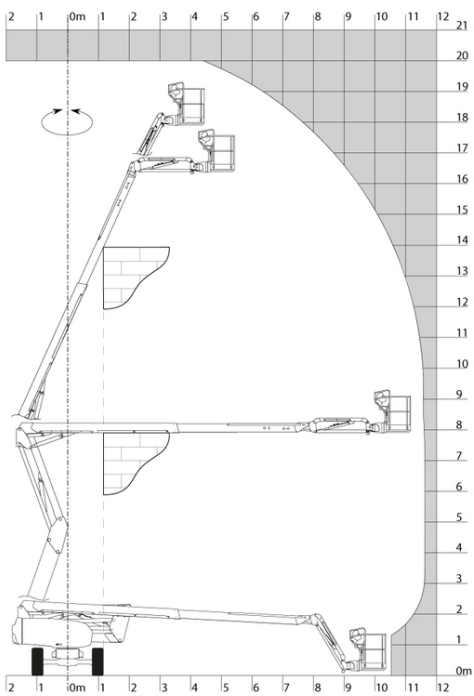


Capacities		Metric
Working height	h21	20 m
Platform height	h7	18 m
Max. outreach		11.57 m
Overhang		7.90 m
Pendular arm rotation (top / bottom)		+65 ° / -60 °
Platform capacity	Q	230 kg
Turret rotation		350 °
Platform rotation (right / left)		90 ° / 90 °
Number of people (inside / outside)		2 / 2
Weight and dimensions		
Platform weight*		7100 kg
Platform dimensions (length x width)	lp / ep	1.50 m x 0.75 m
Overall width	b1	2.32 m
Overall length	l1	8.34 m
Overall height	h17	2.46 m
Overall length (stowed)	l9	6.06 m
Overall height (stowed)	h18	2.71 m
Floor height (access)	h20	0.40 m
Counterweight offset (turret at 90°)	a7	0.64 m
Internal turning radius (over tyres)	b13	2.42 m
External turning radius	Wa3	5.31 m
Ground clearance at centre of wheelbase	m2	0.38 m
Wheelbase	y	2.30 m
Performances		
Drive speed - stowed		5.30 km/h
Drive speed - raised		0.70 km/h
Gradeability		45 %
Permissible leveling		4 °
Wheels		
Tyres type		Solid non-marking tires
Drive wheels (front / rear)		2 / 2
Steering wheels (front / rear)		2 / 0
Braking wheels (front / rear)		0 / 2
Engine/Battery		
Battery / Batteries capacity		48 V / 460 Ah
Integrated charger (V / A)		48 V / 60 A
Miscellaneous		
Ground Pressure		10.90 dan/cm2
Hydraulic Pressure		240 bar
Hydraulic tank capacity		24 l
Standards compliance		
This machine is in compliance with:		European directives: 2006/42/EC- Machinery (revised EN280:2013) - 2004/108/EC (EMC) - 2006/95/EC (Low voltage)

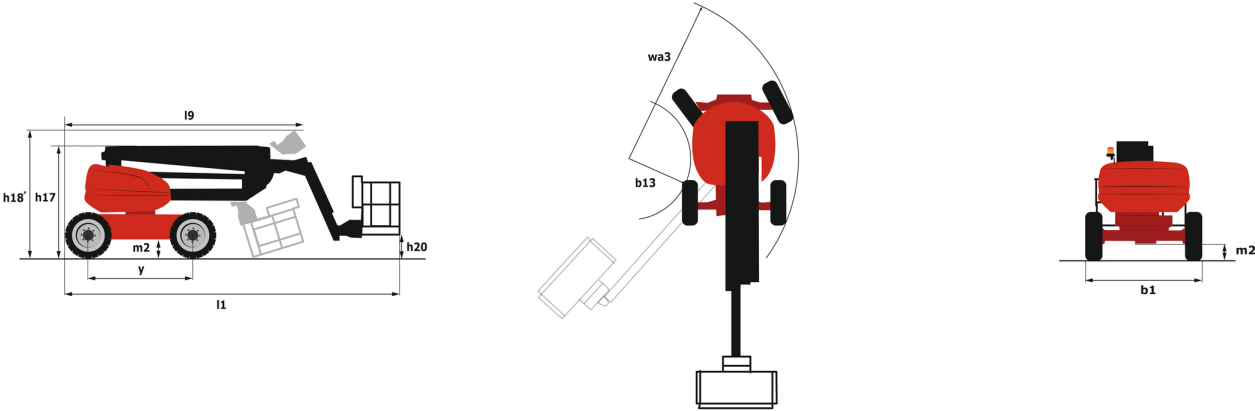
\*Varies according to options and standards of the country to which the machine is delivered

200 ATJ e - Load chart

Load Chart metric



200 ATJ e - Dimensional drawing



# Equipment

## Standard

230V Predisposition  
 4 simultaneous movements  
 4 wheel drive  
 Audible alarm and illuminated indicator lamp (leveling, overload, lowering)  
 Backup electrical pump  
 Biodegradable oil  
 CAN bus technology  
 Centralized recharging of battery  
 Dead man pedal  
 Differential locking on rear axle  
 Easy Manager  
 Emergency stop button in platform and on frame  
 Flat Led Rotating Beacon  
 Fully galvanized basket with demountable floor  
 Integrated diagnostic assistance  
 Large color screen on turret  
 Lead acid batteries  
 Multi-voltage integrated charger  
 Non-marking tyres  
 Oscillating front axle  
 Protective cover for control panel  
 Screen information in the basket  
 Simplified lift system  
 Tool box in platform  
 Travel possible at maximum height  
 Two electric motors of 8.5kW and 16kW

## Optional

110 or 230V plug with differential circuit breaker  
 Access control keypad for easy link  
 Beep on every movement  
 Beep upon travel  
 Biodegradable oil  
 Coded anti-start  
 Easy link with remote lock  
 Fully galvanized basket 1500mm with lateral door  
 Fully galvanized basket 1800mm with lateral door  
 Galvanized basket 1,800 mm  
 SPS : Secondary protection system  
 Safety kit (Harness + helmet)  
 Turret cover with key lock  
 Water predisposition  
 Working headlight in platform



Siège Social  
430 rue de l'Aubinière - 44150 Ancenis Cedex - France  
Tel: +33(0)2 40 09 10 11 - Fax: +33 (0)2 40 09 10 97  
[www.manitou.com](http://www.manitou.com)



This brochure describes versions and configuration options for Manitou products which may be fitted with different equipment. The equipment described in this brochure may be standard, optional or not available depending on version. Manitou reserves the right to change the specifications shown and described at any time and without prior warning. The manufacturer is not liable for the specifications given. For more information, contact your Manitou dealer. Non-contractual document. Product descriptions may differ from actual products. List of specifications is not comprehensive. The logos and visual identity of the company are the property of Manitou and may not be used without authorisation. All rights reserved. The photos and diagrams contained in this brochure are provided for information only.

MANITOU BF SA - Limited company with board of directors - Share capital: 39,668,399 euros - 857 802 508 RCS Nantes