

Technical sheet :

150 AETJ-L BI

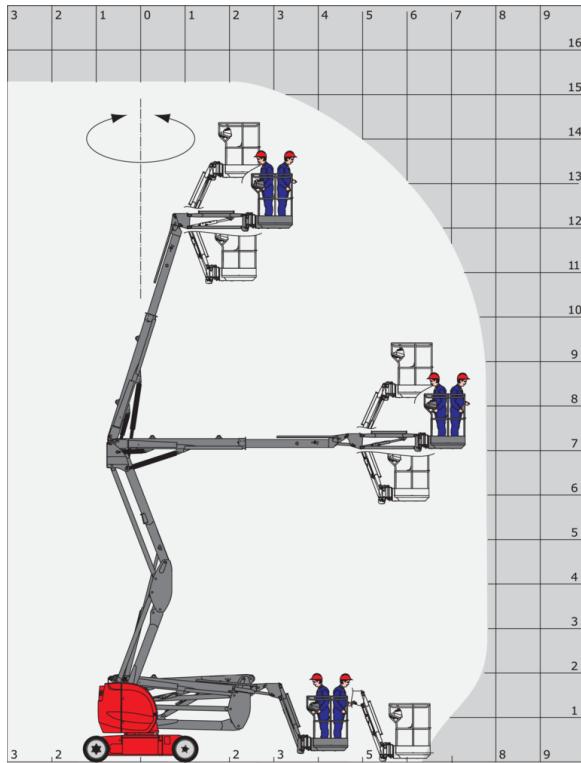


 **MANITOU**
HANDLING YOUR WORLD

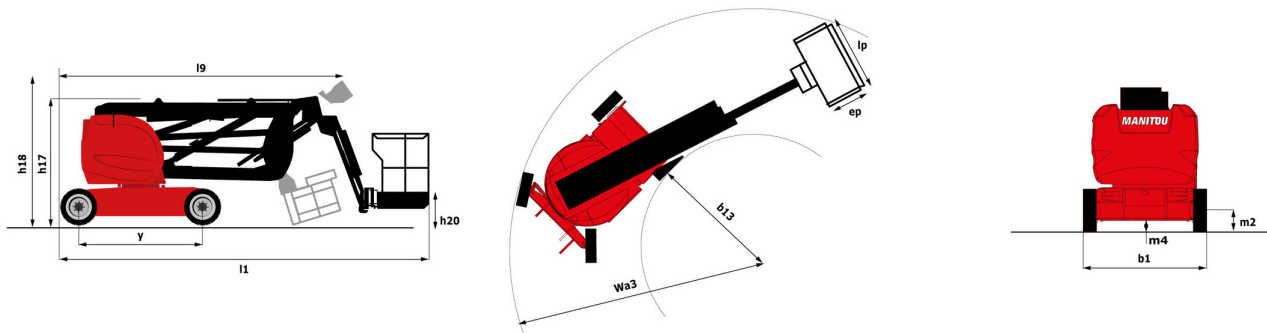
| Capacities | | Metric |
|---|---------|--|
| Working height | h21 | 15.40 m |
| Platform height | h7 | 13.40 m |
| Max. outreach | | 7.81 m |
| Overhang | | 7.27 m |
| Pendular arm rotation (top / bottom) | | +70 ° / -70 ° |
| Platform capacity | Q | 230 kg |
| Turret rotation | | 355 ° |
| Platform rotation (right / left) | | 70 ° / 70 ° |
| Number of people (inside / outside) | | 2 / 2 |
| Weight and dimensions | | |
| Platform weight* | | 6435 kg |
| Platform dimensions (length x width) | lp / ep | 1.20 m x 0.92 m |
| Overall width | b1 | 1.91 m |
| Overall length | l1 | 6.11 m |
| Overall height | h17 | 2.09 m |
| Overall length (stowed) | l9 | 4.55 m |
| Overall height (stowed) | h18 | 2.13 m |
| Floor height (access) | h20 | 0.40 m |
| Jib length | l13 | 1.26 m |
| Counterweight offset (turret at 90°) | a7 | 0 m |
| Internal turning radius (over tyres) | b13 | 1.88 m |
| External turning radius | Wa3 | 4.27 m |
| Tailswing | | 0 m |
| Ground clearance at centre of wheelbase | m2 | 0.18 m |
| Wheelbase | y | 2.20 m |
| Performances | | |
| Drive speed - stowed | | 6 km/h |
| Drive speed - raised | | 0.60 km/h |
| Gradeability | | 23 % |
| Permissible leveling | | 5 ° |
| Wheels | | |
| Tyres type | | Foam Filled Non Marking |
| Dimensions of front wheels | | 0,65x0,25 mm |
| Drive wheels (front / rear) | | 0 / 2 |
| Steering wheels (front / rear) | | 2 / 0 |
| Braking wheels (front / rear) | | 0 / 2 |
| Engine/Battery | | |
| Electric engine power rating | | 2 x 4.50 kW |
| Electric Pump | | 3.70 kW |
| I.C. Engine power rating / Power (kW) | | 12.10 Hp / 9.20 kW |
| Battery / Batteries capacity | | 48 V / 300 Ah |
| Integrated charger (V / A) | | 48 V / 45 A |
| Miscellaneous | | |
| Ground Pressure | | 12.73 dan/cm2 |
| Hydraulic Pressure | | 200 bar |
| Hydraulic tank capacity | | 12 l |
| Fuel tank | | 30 l |
| Vibration on hands/ams | | < 2.50 m/s² |
| Standards compliance | | |
| This machine is in compliance with: | | European directives: 2006/42/EC- Machinery (revised EN280:2013) - 2004/108/EC (EMC) - 2006/95/EC (Low voltage) |

150 AETJ-L BI - Load chart

Load Chart metric



150 AETJ-L BI - Dimensional drawing



Equipment

Standard

230V Predisposition

All-terrain, non-marking, foam-filled tyres

Audible alarm and illuminated indicator lamp (leveling, overload, lowering)

Battery charge indicator lamp

CAN bus technology

Emergency stop button in platform and on frame

Hom in the platform

Hour meter

Integrated diagnostic assistance

Manual emergency lowering

Multi-voltage integrated charger

Negative-type braking on rear wheels

Non-marking, foam-filled tyres

Pendular arm

Platform with open-work floor

Proportional controls

Protective cover for control panel

Slings and securing rings

Tool box in platform

Traction battery

Optional

110 or 230V plug with differential circuit breaker

Beep on every movement

Beep upon travel

Biodegradable oil

Centralized recharging of battery

Cold weather protection oil

Lights

Lockable fuel cap

Personalized paintwork

SMS : Safe Man System

Safety harness

Water predisposition

Working headlight in platform



Siège Social
430 rue de l'Aubinière - 44150 Ancenis Cedex - France
Tel: +33(0)2 40 09 10 11 - Fax: +33 (0)2 40 09 10 97
www.manitou.com



This brochure describes versions and configuration options for Manitou products which may be fitted with different equipment. The equipment described in this brochure may be standard, optional or not available depending on version. Manitou reserves the right to change the specifications shown and described at any time and without prior warning. The manufacturer is not liable for the specifications given. For more information, contact your Manitou dealer. Non-contractual document. Product descriptions may differ from actual products. List of specifications is not comprehensive. The logos and visual identity of the company are the property of Manitou and may not be used without authorisation. All rights reserved. The photos and diagrams contained in this brochure are provided for information only.

MANITOU BF SA - Limited company with board of directors - Share capital: 39,668,399 euros - 857 802 508 RCS Nantes