

Technical sheet :

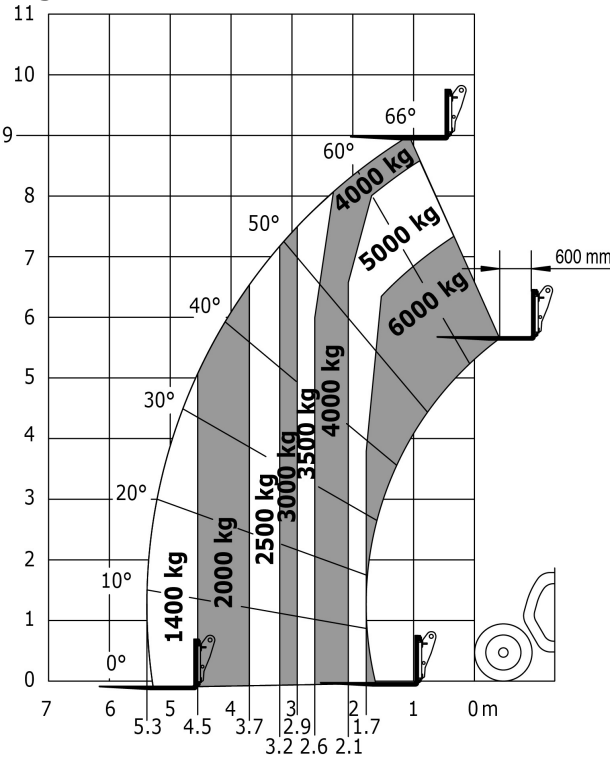
MLT 961-145 V+ L



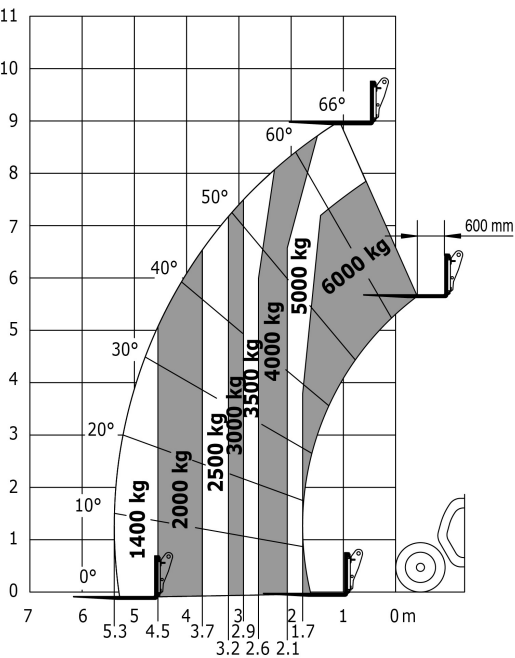
Capacities		Metric
Max. capacity	Q	6000 kg
Max. lifting height	h3	9 m
Max. outreach	l4	5.3 m
Reach at max. height		1.1 m
Breakout force with bucket		7300 daN
Weight and dimensions		
Unladen weight (with forks)		11800 kg
Ground clearance	m4	0.45 m
Wheelbase	y	3 m
Overall length to carriage (with hitch)	l11	6.1 m
Front overhang		1.65 m
Overall width	b1	2.48 m
Overall cab width	b4	1 m
Overall height	h17	2.53 m
Tilt-down angle	a5	138 °
Tilt-up angle	a4	12 °
External turning radius (over tyres)	Wa1	4.3 m
Standard tyres		Alliance - A580 - 500/70 R24 164A8
Drive wheels (front / rear)		2 / 2
Steering wheels (front / rear)		2 / 2
Performances		
Lifting		8.5 s
Lowering		6.5 s
Extension		7 s
Retraction		6 s
Crowd		3.8 s
Dump		3.6 s
Engine		
Engine brand		John Deere
Engine norm		Stage IV / Tier 4 Final
Engine model		PWL 4045
Number of cylinders - Capacity of cylinders		4 - 4500 cm³
I.C. Engine power rating / Power (kW)		141 Hp / 104 kW
Max. torque / Engine rotation		540 Nm/m @1500 tr/min
Drawbar pull (Laden)		9300 daN
Reversible fan		Standard
Engine cooling system		3 radiators water + intercooler + hydraulic oil
Transmission		
Transmission type		M-Vario Plus
Max. travel speed (may vary according to applicable regulations)		40 km/h
Parking brake		Automatic Negative Hand-brake
Service brake		Oil-immersed multi-discs on front & rear axles
Hydraulics		
Hydraulic pump type		Load sensing pump
Hydraulic flow - Pressure		200 l/min - 270 Bar
Flow sharing distributor		Standard
Tank capacities		
Hydraulic oil		153 l
Fuel tank		135 l
Diesel Exhaust fluid (AdBlue® type)		12 l
Noise and vibration		
Noise at driving position (LpA) tested following NF EN 12053 norm		72 dB(A)
Environmental noise (LwA)		105 dB(A)
Vibration to whole hand/arm		< 2.50 m/s²
Miscellaneous		
Safety tractor homologation / cab homologation		Safety tractor homologation - Cab ROPS - FOPS Level 2
Controls		JSM

Load chart

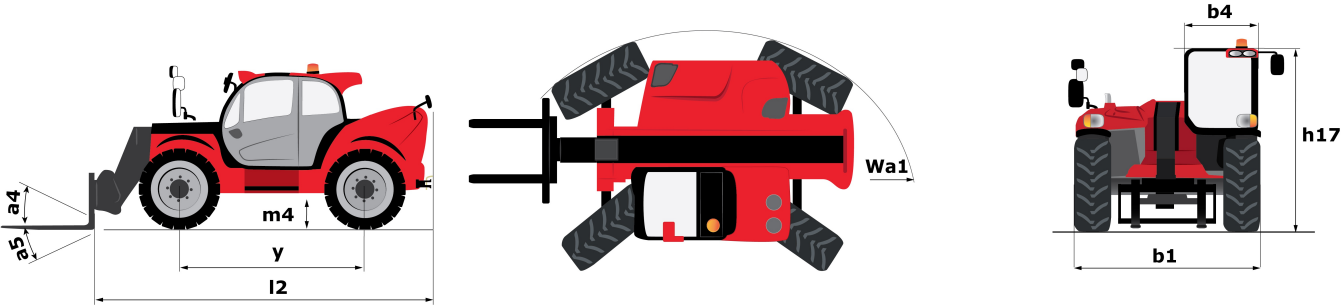
Rough terrain load chart (EN 1459 B) Metric

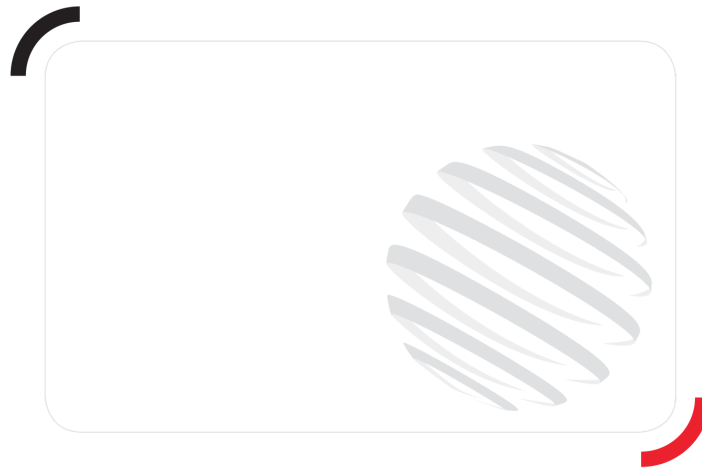


Industrial load chart (EN 1459 A) Metric



Dimensional drawing





Siège Social
430 rue de l'Aubinière - 44150 Ancenis Cedex - France
Tel: +33(0)2 40 09 10 11 - Fax: +33 (0)2 40 09 10 97
www.manitou.com



This brochure describes versions and configuration options for Manitou products which may be fitted with different equipment. The equipment described in this brochure may be standard, optional or not available depending on version. Manitou reserves the right to change the specifications shown and described at any time and without prior warning. The manufacturer is not liable for the specifications given. For more information, contact your Manitou dealer. Non-contractual document. Product descriptions may differ from actual products. List of specifications is not comprehensive. The logos and visual identity of the company are the property of Manitou and may not be used without authorisation. All rights reserved. The photos and diagrams contained in this brochure are provided for information only.

MANITOU BF SA - Limited company with board of directors - Share capital: 39,668,399 euros - 857 802 508
RCS Nantes