

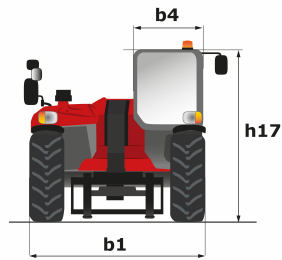
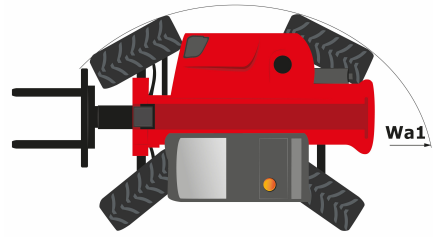
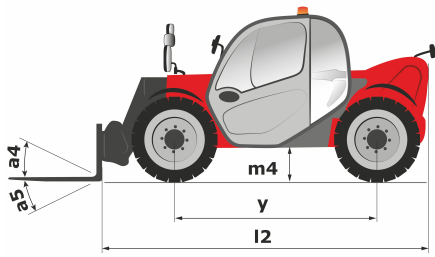
Technical sheet

MT 420 H ST5

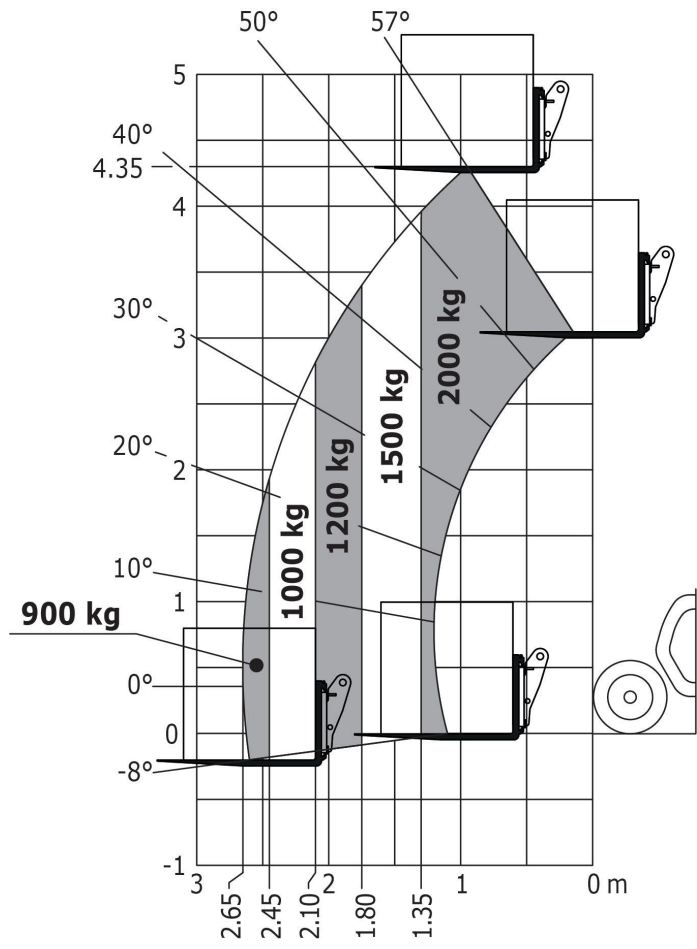
Telehandlers



Capacities	Metric	Imperial
Max. capacity	2000 kg	6561.60 lbs
Max. lift height	4.35 m	14 ft 3 in
Max. reach	2.65 m	8 ft 8 in
Bucket breakout force	1886 daN	4239.90 lbf
Weight and dimensions		
l2 - Overall length of fork carriage	3.64 m	11 ft 11 in
b1 - Overall width	1.49 m	3 ft 3 in
h17 - Overall height	1.97 m	6 ft 6 in
y - Wheelbase	2.13 m	6 ft 12 in
m4 - Ground clearance	0.24 m	9 in
b4 - Overall cab width	0.79 m	2 ft 7 in
Wa1 - Frame outer turning radius	2.98 m	10 ft
Unladen weight (with forks)	4190 kg	9237.37 lbs
Standard tyres	Camso - 12-16.5 12PR SKS 532	Camso - 12-16.5 12PR SKS 532
Standard forks	1200 x 1015 x 100	47.24 x 39.96 x 3.94
Performances		
Lifting	5 s	5 s
Lowering	3.50 s	3.50 s
Telescope extension	4.80 s	4.80 s
Retracting the telescope	3 s	3 s
Scoop	3.30 s	3.30 s
Dump	2.70 s	2.70 s
Engine		
Brand	Kubota	Kubota
Environmental standards	Stage 5	Stage 5
Number of cylinders - Capacity	4 - 2615 cm ³	4 - 159.58 in ³
Power	57 hp / 42 kW	57 hp / 42 kW
Max. torque	174 Nm at 1600 rpm	128.34 ft.lbs at 1600 rpm
Laden drawbar pull	2850 daN	6407.06 lbf
Transmission		
Type	Hydrostatic	Hydrostatic
Number of gears (forward/reverse)	2/2	2/2
Parking brake	Automatic negative parking brake	Automatic negative parking brake
Hydraulics		
Type of pump	Gear pump	Gear pump
Hydraulic flow rate - Pressure	77.40 l/min - 235 bar	20.45 gpm - 3408.39 psi
Tank capacities		
Engine oil	10.20 l	18.49 US gal.
Hydraulic oil	70 l	15.40 US gal.
Fuel	60 l	15.85 US gal.
Cooling liquid	8.60 l	2.27 US gal.
Noise & vibration		
Noise at driving position (LpA)	76 dB(A)	76 dB(A)
Noise to environment (LwA)	104 dB(A)	104 dB(A)
Vibration on hands/arms	<2.50 m/s ²	<8.202 ft/s ²
Miscellaneous		
Steering wheels / Driving wheels	4 / 4	4 / 4
Safety	Standard EN 15000 Cab ROPS - FOPS Level 1	Standard EN 15000 Cab ROPS - FOPS Level 1
Controls	JSM	JSM



Load chart





Siège Social
430 rue de l'Aubinière - 44150 Ancenis Cedex - France
Tel: +33(0)2 40 09 10 11 - Fax: +33 (0)2 40 09 10 97
www.manitou.com



This brochure describes versions and configuration options for Manitou products which may be fitted with different equipment. The equipment described in this brochure may be standard, optional or not available depending on version. Manitou reserves the right to change the specifications shown and described at any time and without prior warning. The manufacturer is not liable for the specifications given. For more information, contact your Manitou dealer. Non-contractual document. Product descriptions may differ from actual products. List of specifications is not comprehensive. The logos and visual identity of the company are the property of Manitou and may not be used without authorisation. All rights reserved. The photos and diagrams contained in this brochure are provided for information only.

MANITOU BF SA - Limited company with board of directors - Share capital: 39,547,824 euros - 857 802 508 RCS Nantes