

Technical sheet :

MLT 625 - 75 H



Capacities		Metric
Max. capacity	Q	2500 kg
Max. lifting height	h3	5.9 m
Max. outreach	l4	3.3 m
Reach at max. height		0.5 m
Breakout force with bucket		4205 daN
Weight and dimensions		
Unladen weight (with forks)		4922 kg
Ground clearance	m4	0.38 m
Wheelbase	y	2.3 m
Overall length to carriage (with hitch)	l11	3.9 m
Front overhang		0.99 m
Overall width	b1	1.81 m
Overall cab width	b4	0.8 m
Overall height	h17	2 m
Tilt-down angle	a5	117 °
Tilt-up angle	a4	12 °
External turning radius (over tyres)	Wa1	3.31 m
Standard tyres		Alliance - A580 - 300/75 R18 142A8
Drive wheels (front / rear)		2 / 2
Steering wheels (front / rear)		2 / 2
Performances		
Lifting		7.3 s
Lowering		4.95 s
Extension		5.2 s
Retraction		3.7 s
Crowd		3.2 s
Dump		3.2 s
Engine		
Engine brand		Kubota
Engine norm		Stage V
Engine model		V3307-CR-T-E5B
Number of cylinders - Capacity of cylinders		4 - 3331 cm ³
I.C. Engine power rating / Power (kW)		75 Hp / 55.4 kW
Max. torque / Engine rotation		265 Nm/m @1400 tr/min
Drawbar pull (Laden)		3240 daN
Reversible fan		Standard
Engine cooling system		2 radiators water + hydraulic oil
Transmission		
Transmission type		Hydrostatic
Number of gears (forward / reverse)		2 / 2
Max. travel speed (may vary according to applicable regulations)		25 km/h
Differential lock		Limited slip differential on front axle
Parking brake		Automatic negative parking brake
Service brake		Oil-Immersed multi-discs braking on front axles
Hydraulics		
Hydraulic pump type		Gear pump
Hydraulic flow - Pressure		86 l/min - 235 Bar
Tank capacities		
Hydraulic oil		115 l
Fuel tank		63 l
Noise and vibration		
Noise at driving position (LpA) tested following NF EN 12053 norm		76 dB(A)
Environmental noise (LwA)		104 dB(A)
Vibration to whole hand/arm		< 2.50 m/s ²
Miscellaneous		
Safety tractor homologation / cab homologation		Cab ROPS - FOPS Level 1
Controls		JSM

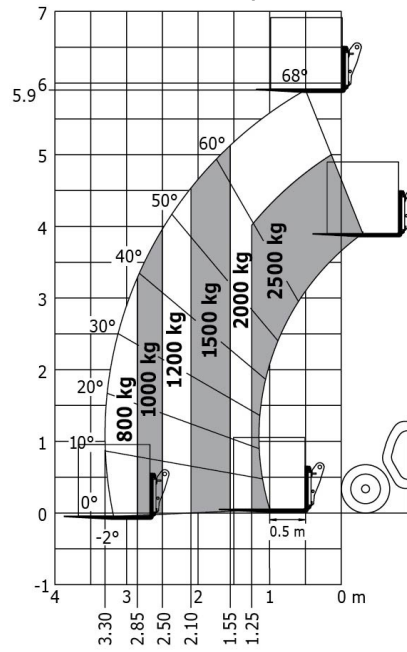
Options / Finishing

S : Standard / O : Optional / - : Not available

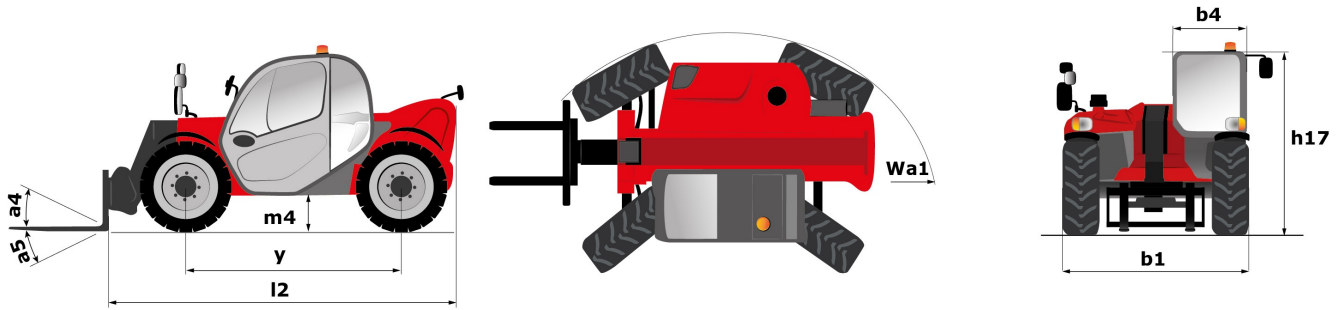
	Classic	Premium	Elite
Lifting function			
Easy Connect System (E.C.S.)	S	S	S
Hydraulic attachment locking	O	O	O
Return pipe to hydraulic oil tank	O	O	O
Electrovalve for 2 hydraulic functions (on boom head)	O	O	O
Boom suspension	-	O	S
Operator station			
"Active CRC" boom suspension	O	O	S
Mechanical cloth-covered seat (GRAMMER)	S	-	-
Air suspension cloth-covered seat (GRAMMER)	O	S	S
Tuner car radio (50 W)	S	-	-
Bluetooth USB car radio with integrated microphone (100 W)	O	S	-
Bluetooth USB car radio with extra microphone (100 W)	O	O	S
Air conditioning with manual adjustment	O	S	S
Manual air conditioning	O	S	S
Air suspension cloth-covered seat	-	S	S
Motorization/Power			
Auto Reversing Fan	S	S	S
Auto reversing fan	S	S	S
Continuous flow hydraulics	O	O	S
Hand throttle	O	O	S
Attachment hydraulic flow control system	O	O	S
Quick drain hose	S	S	S
Speed limiter	O	O	S
simultaneous movements flow sharing distributor	O	O	O
Lighting			
Front and rear work lights on cab (x4: 2 front + 2 rear)	S	-	-
Front and rear LED work lights on cab (x4 : 2 front + 2 rear)	O	S	S
Poultry farming blue lights	O	O	O
Boom Work Lights (on fixed part) (x2)	O	O	-
Flat LED rotating beacon (-71 mm)	O	O	O
Working lights on boom head	-	-	O
Safety			
Audio warning on reverse	S	S	S
Rear windscreen defrost	O	O	O
Audio warning on reverse movements	S	S	S
Secondary functions			
Manual rotating towing hitch	O	O	O

Load chart

Rough terrain load chart (EN 1459 B) Metric



Dimensional drawing





Siège Social

430 rue de l'Aubinière - 44150 Ancenis Cedex - France

Tel: +33(0)2 40 09 10 11 - Fax: +33 (0)2 40 09 10 97

www.manitou.com



This brochure describes versions and configuration options for Manitou products which may be fitted with different equipment. The equipment described in this brochure may be standard, optional or not available depending on version. Manitou reserves the right to change the specifications shown and described at any time and without prior warning. The manufacturer is not liable for the specifications given. For more information, contact your Manitou dealer. Non-contractual document. Product descriptions may differ from actual products. List of specifications is not comprehensive. The logos and visual identity of the company are the property of Manitou and may not be used without authorisation. All rights reserved. The photos and diagrams contained in this brochure are provided for information only.

MANITOU BF SA - Limited company with board of directors - Share capital: 39,668,399 euros - 857 802 508
RCS Nantes